
SCRIPTCAST

Powered by EZCast Software

User Manual

Rev. 1.00

1. General

EZCast is a special program to project your mobile device display to another screen through Wi-Fi connection. You can enhance your TV/Projector with more features like decoding document files, linking with your Dropbox account, web surfing, photo viewer, streaming video, live camera, internet video and more. It supports other popular standards like DLNA, Miracast and AirPlay as well.

1.1. Hardware Installation



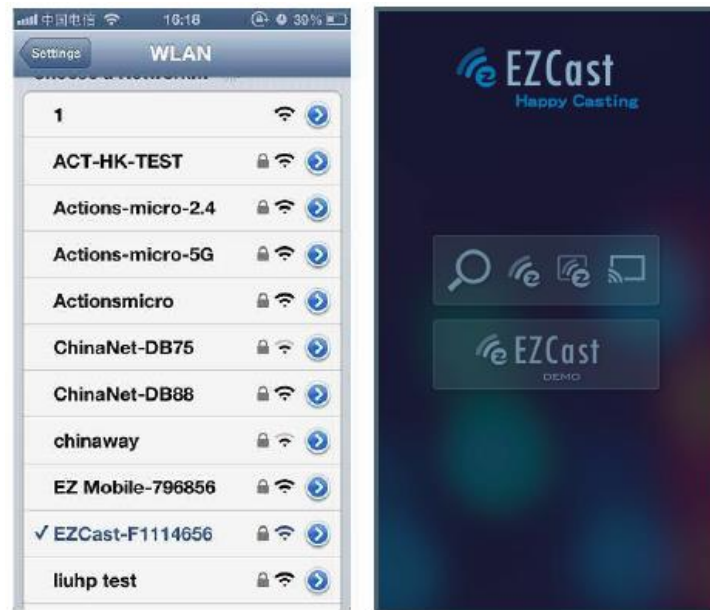
1. Please connect ScriptCast's micro USB port to your power adaptor or USB power (Please make sure your USB power can supply over 500mA)
2. Connect ScriptCast to your TV/Projector's HDMI port, and switch the TV/Projector's source to it
3. You will see the EZCast main menu pops up and hear the welcome tone.
4. Please download EZCast app on different platforms (Windows/Mac/iOS/Android) to enjoy the Wi-Fi display technology!

2. ScriptCast for IOS

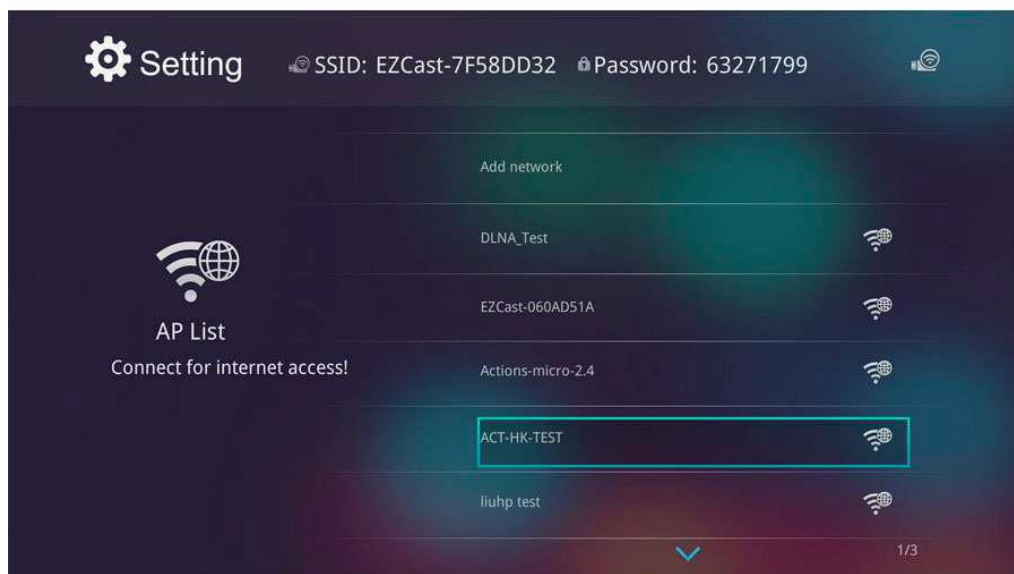
iOS	iOS 7 and above
Device	All iPhone model after iPhone 4 All iPad model after iPad 2 All iPod touch after iPod touch 4 th generation
Resolution support	● iPhone: 480x320~1136x640 ● iPad: 1024x768~2048x1536
Storage	At least 40MB free space needed

1. You can search the App name "EZCast" in App Store. (<http://goo.gl/TUA7tz>)

2. Before you start the app, please connect your iOS device's Wi-Fi with ScriptCast dongle SSID (ex: EZCAST-xxxxxxx)



3. When you execute the app, you can use "Demo mode" or "Find device" to start over to enjoy our features.
4. Click "Find device" to discover EZCast receiver and start to cast.
5. In the first time of app launching, we will pop up in your Wi-Fi router list so that you can add ScriptCast dongle to connect to your home Wi-Fi router to keep internet surfing. (we strongly recommend you to establish ScriptCast dongle's Wi-Fi as your home/company network to keep internet surfing since your mobile device's Wi-Fi will be linking to ScriptCast dongle.)



6. Besides the ScriptCast dongle, if you have a ChromeCast dongle, you can also find it as a ScriptCast receiver, if your iPhone is under same network with your ChromeCast.

7. In the demo mode, you can browse through all major features, even without connecting to ScriptCast dongle.

*Please be noted that not all ScriptCast features are supported by ChromeCast dongle, to enjoy the best Wi-Fi display experiences, we encourage you to use our ScriptCast dongle.

2.1. Features

2.1.1. Photo viewer

- You will have to allow ScriptCast to share your camera roll and enable the location service before using the Photo feature.



- In Photo Viewer you can select a photo to be displayed on the TV. You can also use gesture control to zoom in/out or change the photo.
- Furthermore, there is a practical tool called "Sketch" which allows you to draw on the chosen photo and save it if you like.

2.1.2. Document viewer

- The Document viewer supports MS-Office, PDF and Apple iWorks. Before you start to display, please sync the document files to your iOS device through iTunes.
- The Document viewer supports Sketch as well, allowing you to make notes on the document and save it to your camera roll.

*Please note that some documents may be shown differently on the TV than how they look on your device



2.1.3. Live camera

- Live camera is a real object camera that allows you to stream through your device's camera and take a snapshot to edit.
- You can adjust image quality and switch between front and rear camera. You can enable Sketch and save the image to your device.



2.1.4. Video player

- There are two sources to video streaming. You can sync the video you like through iTunes (iTunes File Syncing), or you can select a video from your recorded videos (Camera Roll)
- Please note that iOS will compress the recorded videos before streaming to save the bandwidth. You can also decide if you would like to save it to the EZCast App for future use.
- If your synced video comes with subtitles, they will be automatically shown with video streaming

*EZCast App only supports MPEG 1, 2, 4, H.264 and RMVB video formats. For subtitles, we support srt, smi, ssa and cdg formats.



2.1.5. Music player

- The Music player allows you to stream music through Wi-Fi and supported playlists.
- There are multiple music formats supported by EZCast App: ape, flac, ogg, mp3, wma, wav, rm, m4a, aac, dts, ac3, ra, aif, aiff, mka

*Please note that EZCast App cannot access your iTunes music library due to iOS limitations.



2.1.6. Web browser

- ScriptCast comes with its own built-in browser and a selection of popular, featured websites.
- The homepage changes dynamically depending on the country settings on your device.
- The Sketch function is also supported.

2.1.7. Cloud storage

- You can link to your Dropbox or Google Drive account to access your cloud storage anywhere. All content will be available for you to display or download.
- You can also enable the Sketch functionality if you download and decode a document file

*The iOS version of the EZCast App does not support Google Drive yet

2.1.8. Live TV

- We have categorised different online TV websites for you to choose from.
- Live TV allows you to choose from the featured TV websites and watch your chosen program instantly
- TV programs may vary depending on your country settings

2.1.9. Cloud media

- Cloud media is a shortcut for all major video websites.
- You can watch YouTube, Vimeo and other online video sites.

2.1.10. Comment

- Your feedback is of high importance to us, hence, we encourage you to use the Comment functionality to communicate with us regarding what we could improve.

2.1.11. Update

- This functionality allows you to check for App updates and update whenever you like

2.1.12. Social network



- This is a quick way to check your social media channels and screen share videos from your device

2.2. Special features

2.2.1. Settings



- In the Settings function you can set-up the ScriptCast Receiver's configuration, including output resolution, change the SSID password, set up the router connection for internet surfing, change the language and update with the latest software



2.2.2. EZAir

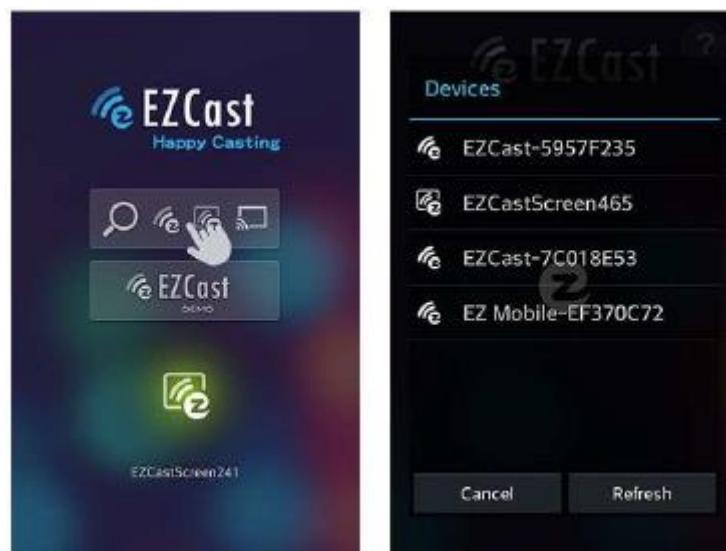


- EZAir is a powerful feature, compatible with AirPlay
- The ScriptCast device can be found when AirPlay is on
- EZAir allows you to screen share your main screen presentation to multiple devices. In other words, meeting attendees can access your presentation on their own devices
- In the iOS original photo, video and audio playback, you can simply click the display button to cast to the ScriptCast receiver
- Some Apple devices that support AirPlay Mirroring will also be able to discover the ScriptCast receiver for screen mirroring

3. ScriptCast for Android

Phone/Pad	Android 4.0 ICS model with 1GB RAM
Resolution	WVGA ~1080p
Storage	At least 40MB free space needed

- You can search for our EZCast App on Google Play
- Before starting the app, we suggest that you connect to the ScriptCast Wi-Fi with ScriptCast dongle SSID (ex: EZCAST-xxxxxxx)
- If you do not connect to the ScriptCast Wi-Fi before launching the App, the App will require you to connect once you launch it



- When launching the app, you can select between “demo mode” and “find device”
- Clicking on “find device” will allow you to connect to the ScriptCast device and start screen sharing
- You will also be able to find other mobile devices that are connected to the ScriptCast network
- We strongly recommend you to list the ScriptCast Wi-Fi as your home/work network as your device will be linked to the ScriptCast dongle



- Besides the ScriptCast dongle, if you have a ChromeCast dongle, you can find it as a ScriptCast receiver if your ChromeCast device is on the same network as your mobile device

*Please note that not all ScriptCast features are supported by the ChromeCast dongle, to enjoy the best Wi-Fi display experience, we encourage you to use the ScriptCast dongle

3.1. Features

3.1.1. Photo viewer

- In Photo Viewer you can select a photo to be displayed on the TV. You can also use gesture control to zoom in/out or change the photo.
- Furthermore, there is a practical tool called "Sketch" which allows you to draw on the chosen photo and save it if you like.

3.1.2. Document viewer

- The Document viewer supports MS-Office, PDF and Apple iWorks.
- The Document viewer supports Sketch as well, allowing you to make notes on the document and save it to your camera roll.

*Please note that some documents may be shown differently on the TV than how they look on your device



3.1.3. Live camera

- Live camera is a real object camera that allows you to stream through your device's camera and take a snapshot to edit.
- You can adjust image quality and switch between front and rear camera. You can enable Sketch and save the image to your device.



3.1.4. Video player

- You can select a video from your recorded videos (Camera Roll)
- Please note that your device will compress the recorded videos before streaming to save the bandwidth. You can also decide if you would like to save it to the EZCast App for future use.
- If your synced video comes with subtitles, they will be automatically shown with video streaming

*EZCast App only supports MPEG 1, 2, 4, H.264 and RMVB video formats. For subtitles, we support srt, smi, ssa and cdg formats.



3.1.5. Music player

- The Music player allows you to stream music through Wi-Fi and supported playlists.
- There are multiple music formats supported by EZCast App: ape, flac, ogg, mp3, wma, wav, rm, m4a, aac, dts, ac3, ra, aif, aiff, mka

*Please note that EZCast App cannot access your iTunes music library due to iOS limitations.



3.1.6. Web browser

- ScriptCast comes with its own built-in browser and a selection of popular, featured websites.
- The homepage changes dynamically depending on the country settings on your device.

- The Sketch function is also supported.

3.1.7. Cloud storage

- You can link to your Dropbox or Google Drive account to access your cloud storage anywhere. All content will be available for you to display or download.
- You can also enable the Sketch functionality if you download and decode a document file

*Please note that Google Drive is only available on Android 4.4 or later versions

3.1.8. Live TV

- We have categorised different online TV websites for you to choose from.
- Live TV allows you to choose from the featured TV websites and watch your chosen program instantly
- TV programs may vary depending on your country settings

3.1.9. Cloud media

- Cloud media is a shortcut for all major video websites.
- You can watch YouTube, Vimeo and other online video sites.

3.1.10. Comment

- Your feedback is of high importance to us, hence, we encourage you to use the Comment functionality to communicate with us regarding what we could improve.

3.1.11. Update

- This functionality allows you to check for App updates and update whenever you like

3.1.12. Social network

- This is a quick way to check your social media channels and screen share videos from your device

3.2. Special features

3.2.1. Settings

- In the Settings function you can set-up the ScriptCast Receiver's configuration, including output resolution, change the SSID password, set up the router connection for internet surfing, change the language and update with the latest software



3.2.2. EZMirror

- EZMirror is a powerful feature, compatible with Miracast
- You can click to the EZMirror icon on your ScriptCast App and the receiver will switch to Miracast mode

- Once switched on, your device has 60 seconds to connect to the receiver. Please select your Miracast function on your mobile device's settings page



- EZMirror allows you to screen share your main screen presentation to multiple devices. In other words, meeting attendees can access your presentation on their own devices
- We also recommend you to connect your mobile device to your home network to keep interconnection

3.2.3. DLNA

- DLNA is an industrial standard, allowing you to stream multimedia formats through Wi-Fi/LAN
- When clicking on the DLNA icon, there will be a pop-up support list allowing you to download the DLNA app, if the app is already installed, it will run automatically



4. ScriptCast for Windows

CPU	Dual Core 2 GHz or higher (ATOM not supported)
Graphic card	Graphic card with 64MB VRAM or above
OS version	Windows XP SP3, Vista SP2, Windows 7 SP1, Windows 8/8.1 and above
PC's WiFi	802.11n (2T2R recommended)

*Audio will not be supported on XP and extension mode is no longer available on Windows 8

- You can download the ScriptCast App from <http://scriptcast.co.uk/windows-download/>
- Please select the version you would like to install
- Please connect your ScriptCast device to your PC, install the software and restart your computer for the software to activate
- Before starting the app, we suggest you connect to the ScriptCast dongle SSID (ex: EZCAST-xxxxxxx)
- Allow ScriptCast to access your PC



- Please select the device ID and connect to it



4.1. Features

4.1.1. Turn off Mirror Extension switch

- You can switch the different modes from this button
- Our app will automatically adjust the resolution to fit the main screen, therefore, there is no need for you to manually adjust it

*Please note that some video player apps may not allow you to play video on extension screen

4.1.2. High quality Low quality

- This feature will switch the image quality of your screen sharing
- High quality will display better image but will also consume more Wi-Fi bandwidth, whereas Low quality can offer better frame rate

4.1.3. Audio on Audio off

- This will allow you to turn the audio on/off during screen share

*Please note that audio transmission is not available for Windows XP

4.1.4. Music streaming



- When you click on Music streaming, our ScriptCast app launches your file manager so you can choose which music you would like to play
- You can use the ScriptCast control bar to adjust the volume and progress bar

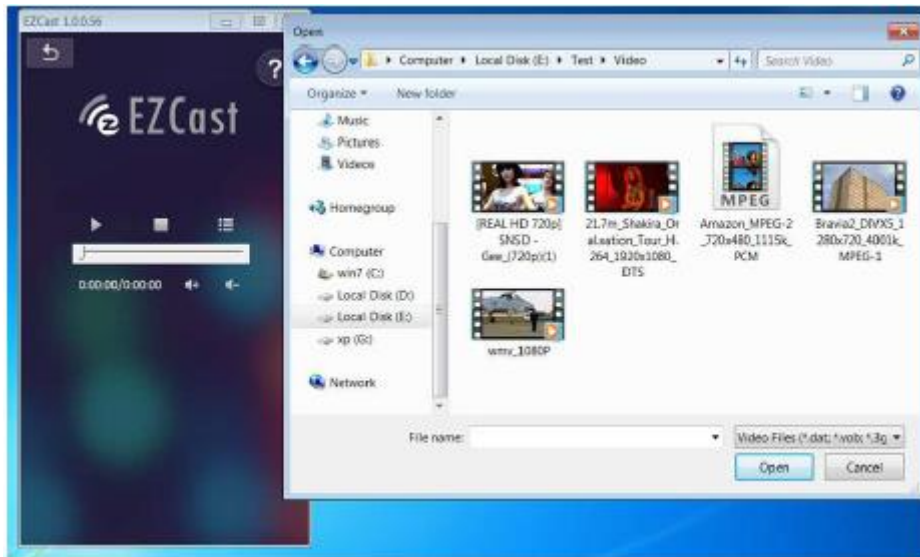
*Only the supported audio formats can be played



4.1.5. Video streaming



- Similar to music streaming, video streaming launches a file manager that allows you to choose the video that you would like to stream
- You can adjust the volume and progress bar from the ScriptCast App



4.1.6. Update

- This functionality allows you to check for app updates and update whenever you like



4.1.7. DLNA

- DLNA is an industrial standard, allowing you to stream multimedia formats through Wi-Fi/LAN
- When clicking on the DLNA icon, ScriptCast will enter DMR mode allowing you to select the DLNA app and connect to it

4.1.8. Settings




- In the Settings function you can set-up the ScriptCast Receiver's configuration, including output resolution, change the SSID password, set up the router connection for internet surfing, change the language and update with the latest software

5. ScriptCast for Mac

CPU	Dual Core Intel Core i1.4 GHz or higher(PowerPC not supported)
Graphic card	Graphic card with 64MB VRAM or above
OS version	Mac OS X 10.8 and above
Recommended Models	Mac Book series and iMac series after E/2011

- You can download the ScriptCast App from <http://scriptcast.co.uk/download-for-mac/>



Mac OS Download -Latest version 2.2.0 Date:2017-04-26

EZCast application for Mac version, developed by WinnerWave, displays your Mac OS embedded iMac, Macbook and MacAir wirelessly via EZCast devices or platforms.

Requirements:

- Mac OS 10.10 above
- Supports Extension and Mirror with audio transmission
- Supports music and video streaming

[Download](#)

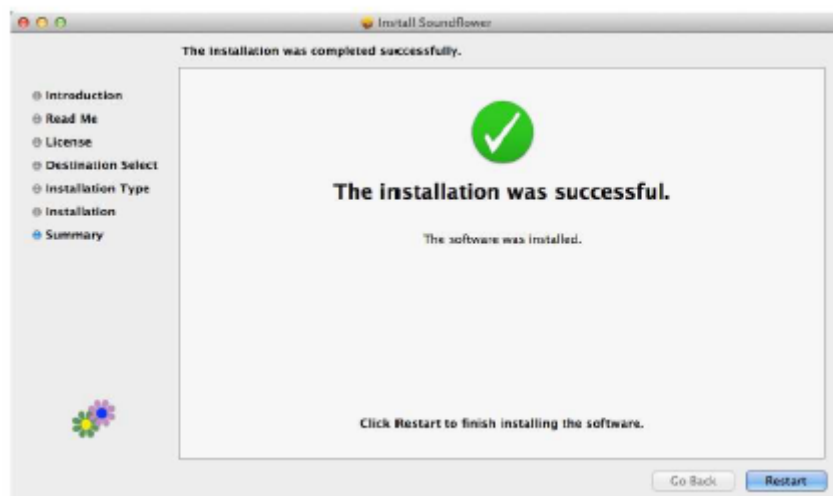
- After the ScriptCast App is downloaded, double click it to install it
- Install ScriptCast App into Macintosh HD



- The App will also install audio drivers. Please click continue after the pop-up



- Please restart after installation is done



- After restarting your PC, you will be able to find the ScriptCast app in your Applications

- Please connect to the ScriptCast dongle Wi-Fi before launching the App



- Once connected to the ScriptCast dongle Wi-Fi, the App will automatically connect to it



5.1. Features

5.1.1. Turn off Mirror Extension switch

- You can switch the different modes from this button
- Our app will automatically adjust the resolution to fit the main screen, therefore, there is no need for you to manually adjust it

*Please note that some video player apps may not allow you to play video on extension screen

5.1.2. High quality Low quality

- This feature will switch the image quality of your screen sharing
- High quality will display better image but will also consume more Wi-Fi bandwidth, whereas Low quality can offer better frame rate

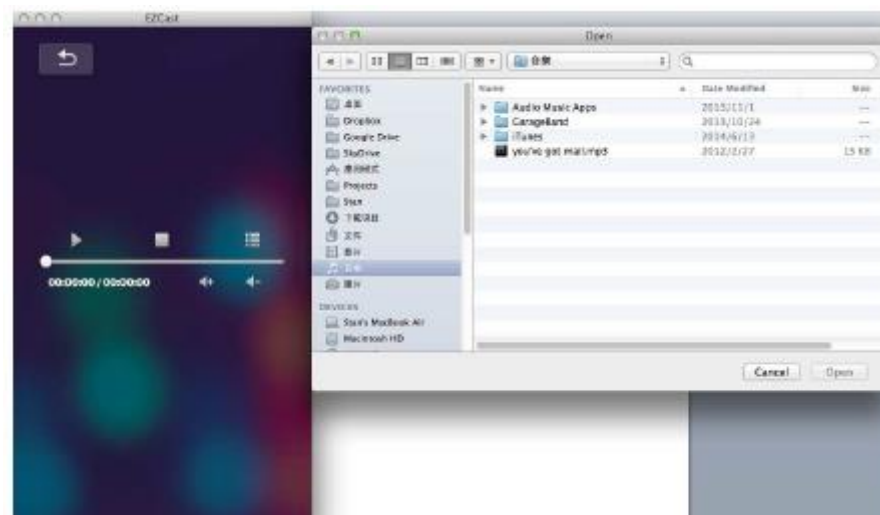
5.1.3. Audio on Audio off

- This will allow you to turn the audio on/off during screen share

5.1.4. Music streaming

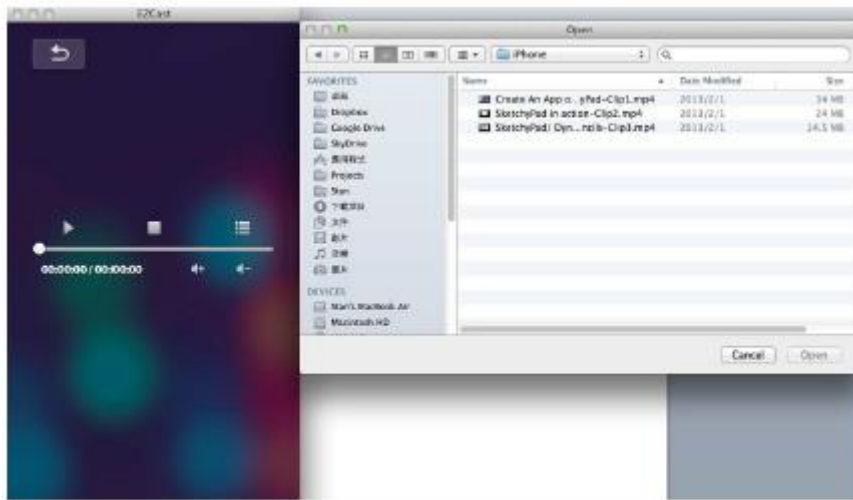
- When you click on Music streaming, our ScriptCast app launches your file manager so you can choose which music you would like to play
- You can use the ScriptCast control bar to adjust the volume and progress bar

*Only the supported audio formats can be played



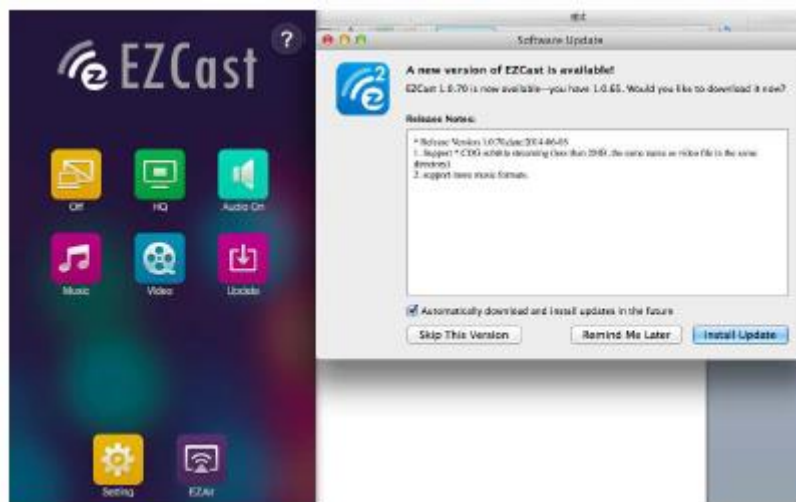
5.1.5. Video streaming

- Similar to music streaming, video streaming launches a file manager that allows you to choose the video that you would like to stream
- You can adjust the volume and progress bar from the ScriptCast App



5.1.1. Update

- This functionality allows you to check for app updates and update whenever you like



5.1.1. Settings

- In the Settings function you can set-up the ScriptCast Receiver's configuration, including output resolution, change the SSID password, set up the router connection for internet surfing, change the language and update with the latest software

5.1.2. EZAir

- EZAir is a powerful feature, compatible with AirPlay
- The ScriptCast device can be found when AirPlay is on
- EZAir allows you to screen share your main screen presentation to multiple devices. In other words, meeting attendees can access your presentation on their own devices
- In the iOS original photo, video and audio playback, you can simply click the display button to cast to the ScriptCast receiver
- Some Apple devices that support AirPlay Mirroring will also be able to discover the ScriptCast receiver for screen mirroring



*Please be noted the Firmware of EZCast dongle must be higher than 11565 to support AirPlay Mirror